

publicase
COMUNICAÇÃO CIENTÍFICA

Treinamento Publicase em Redação
e Publicação Científica

INTRODUÇÃO

Palestrante:

Marcia Triunfol Elblink (marcia@publicase.com.br)

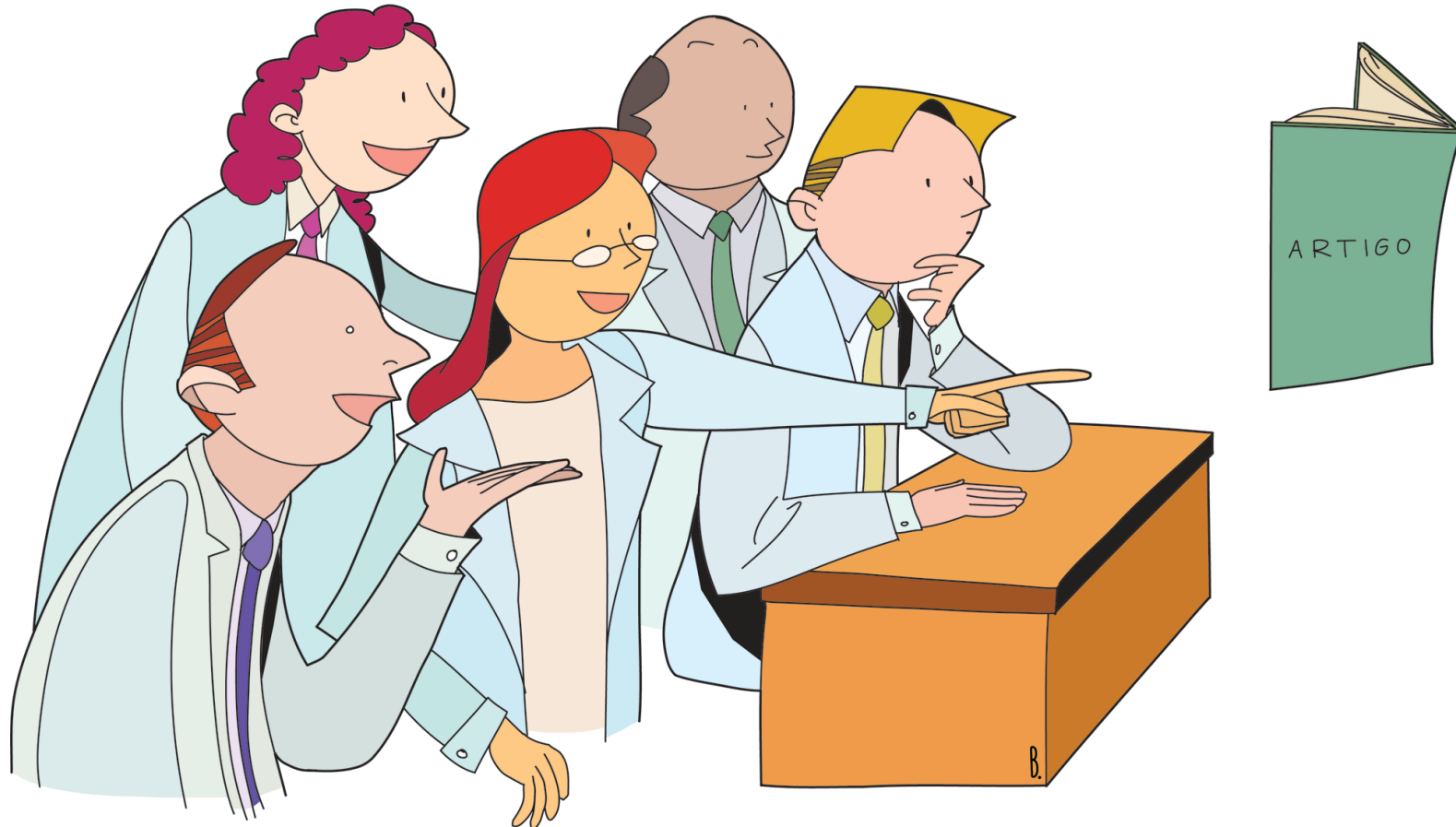
Skype: Publicase

ESTAMOS NO FACEBOOK, procure por
PUBLICASE COMUNICAÇÃO CIENTÍFICA



Esta apresentação está disponível em <http://www.publicase.com.br/site2011/oficina.asp>

Qual o principal objetivo da seção introdução?



Rumo!

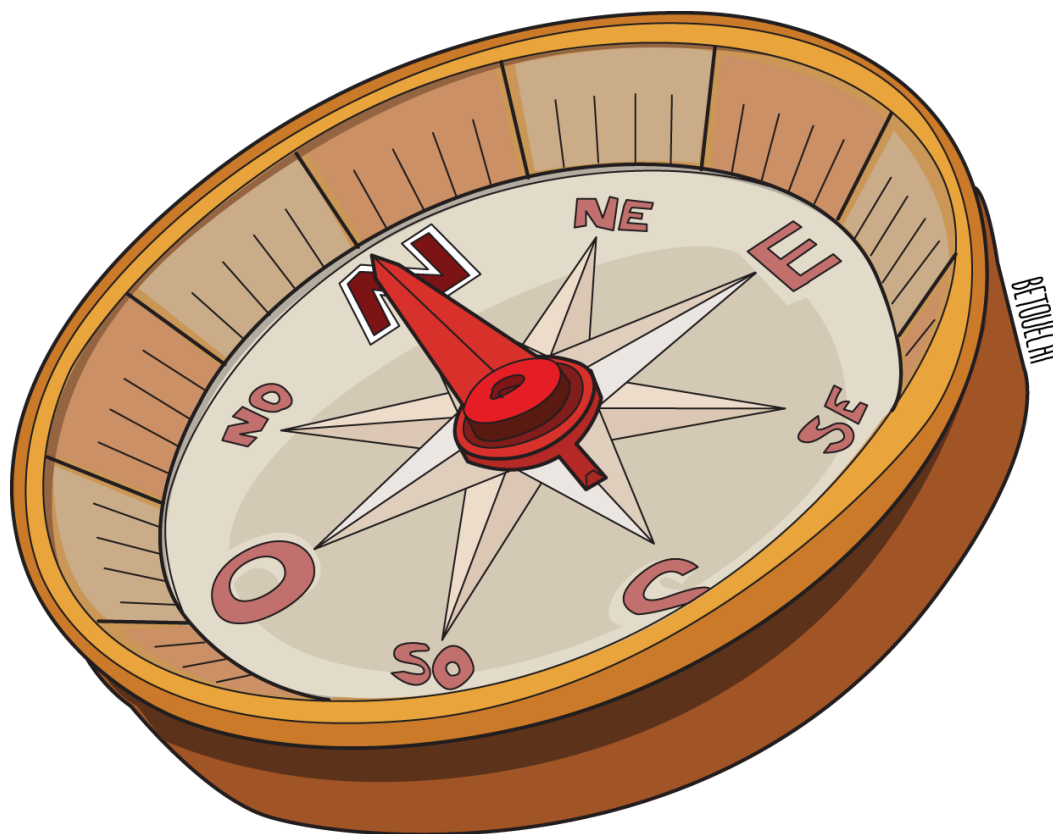


Ilustração: BETOUJECHI/PINGADO

Partes comumente encontradas na introdução

- Apresentação do assunto
- Informação que já se tem sobre o assunto
- Informação que ainda não se tem sobre o assunto
- Pergunta do estudo

CENÁRIO

“*Mycobacterium tuberculosis* is the causative organism of tuberculosis (TB) and produces 8 million new cases of TB annually.”

“Sub-Saharan Africa represents only 10% of the world's population but more than 62% of the world's HIV/AIDS cases.”

ANTECEDENTES

One factor that may contribute to any exacerbation of HIV/AIDS is the high prevalence of parasitic worm infections, such as schistosomiasis [\[3\]](#),[\[4\]](#).

However, because it is not possible to directly test this hypothesis in humans, studies to date have evaluated in vitro exposure of cells to virus [\[5\]](#),[\[6\]](#), the effects of schistosome infection on established viral infection [\[7\]](#),[\[8\]](#), or epidemiologic evaluations of the effect of praziquantel treatment on viral load [\[9\]](#)–[\[12\]](#).

Recent findings in neuroscience suggest that the neurotransmitters dopamine [3] and serotonin [4] have important roles in decision making. Genes that regulate these neurotransmitters impact the processing of information about rewarding [5]–[6] and harmful stimuli [6]–[8], are related to personality traits such as extraversion [9], novelty seeking [10] and anxiety [11], and are associated with developing addictions [12].

LACUNA

One factor that may contribute to any exacerbation of HIV/AIDS is the high prevalence of parasitic worm infections, such as schistosomiasis [3],[4]. However, because it is not possible to directly test this hypothesis in humans, studies to date have evaluated in vitro exposure of cells to virus [5],[6], the effects of schistosome infection on established viral infection [7],[8], or epidemiologic evaluations of the effect of praziquantel treatment on viral load [9]–[12].

None of these approaches address the issue of whether a worm infection increases the susceptibility of the host to acquire *de novo* infection with an immunodeficiency virus after mucosal exposure, the predominant route of HIV transmission in humans.

PERGUNTA

“To directly investigate this **essential** question, we tested the effect of *Schistosoma mansoni* infection on host susceptibility to immunodeficiency virus infection using schistosome-infected and control macaques exposed intrarectally to successively lower doses of the recently described R5-tropic SHIV-C, SHIV-1157ipd3N4”

“We asked whether or not genetic variations in these two candidate functional polymorphisms contribute to individual differences in financial risk taking preferences.”

“We hypothesized that individuals carrying two copies of the s allele of the 5-HTTLPR would be significantly more risk averse relative to individuals carrying one or two copies of the l allele.”

Adicional

“The objective of our study was to identify the most robust mathematical model to describe the establishment and decline of NGFs in the human ovary from conception to menopause.

This will allow us to estimate the number of NGFs present at a given age and describe the rate of recruitment of NGFs towards maturation or apoptosis with increasing age.”

“This study aims to improve the definition of cell wall gene repertoire in the Fulanacea family. To this end we used in silico genomic techniques. The results presented herein reveal for the first time that cell wall genomic repertoire varies among Fulanacea genomes. These results may shed light into the role of cell wall genes into the mechanisms by which bacteria invade and colonize their host. This knowledge can lead to novel ways of preventing bacteria induced Fulanacea diseases or assist in selecting pathogen resistant varieties.”

“To identify genetic loci regulating primary dentition we performed a general population based genome-wide association (GWA) study of tooth development in infancy among individuals from the 1966 Northern Finland Birth Cohort (NFBC1966) and the Avon Longitudinal Study of Parents and Children (ALSPAC). **These phenotypes are relevant to later tooth development because teeth largely acquire their final form at a very early age. The availability of longitudinal birth cohort data allowed us to investigate life-course associations with dental occlusion defects.**”

Direcionando a introdução

TÉCNICA DE ZOOM IN

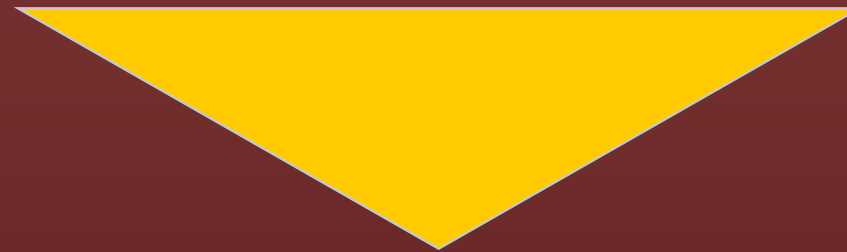
INFORMAÇÃO MAIS GERAL



INFORMAÇÃO MAIS ESPECÍFICA

ZOOM IN

GERAL: Caffeine (1,3,7-trimethylxanthine) is the most widely consumed psychoactive substance in the world with nearly 90% of adults reporting regular consumption of caffeine-containing beverages and foods.



ESPECÍFICO: We aimed to examine the influence of common genetic variation on habitual caffeine consumption behavior by undertaking a meta-analysis of genome-wide association studies (GWAS) from population-based cohorts.