

publicase  
COMUNICAÇÃO CIENTÍFICA

## Treinamento Publicase em Redação e Publicação Científica

# DISCUSSÃO

Palestrante:

Marcia Triunfol Elblink ([marcia@publicase.com.br](mailto:marcia@publicase.com.br))

Skype: Publicase

ESTAMOS NO FACEBOOK, procure por  
PUBLICASE COMUNICAÇÃO CIENTÍFICA



Esta apresentação está disponível em <http://www.publicase.com.br/site2011/oficina.asp>

# ESSA É A HORA

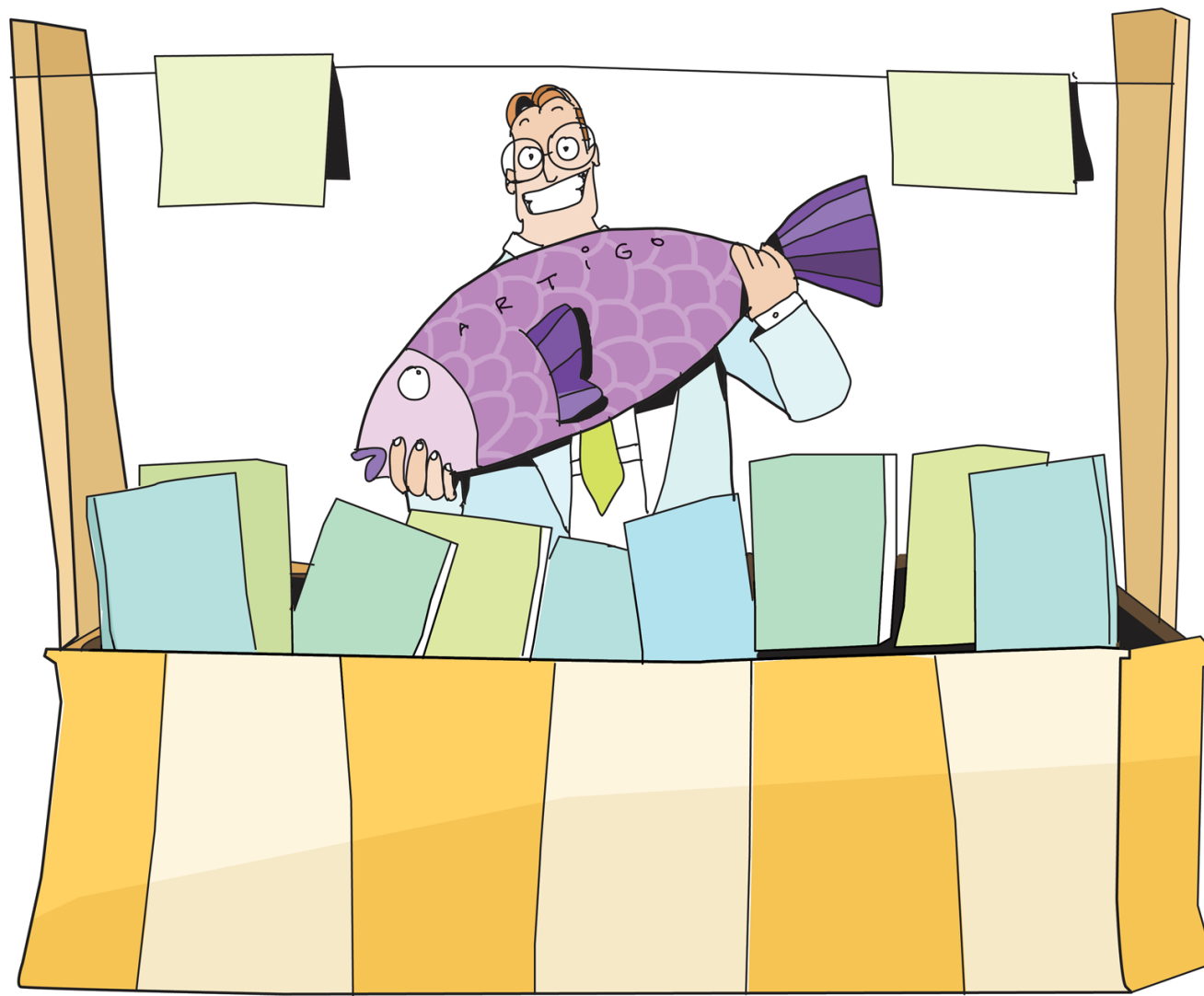
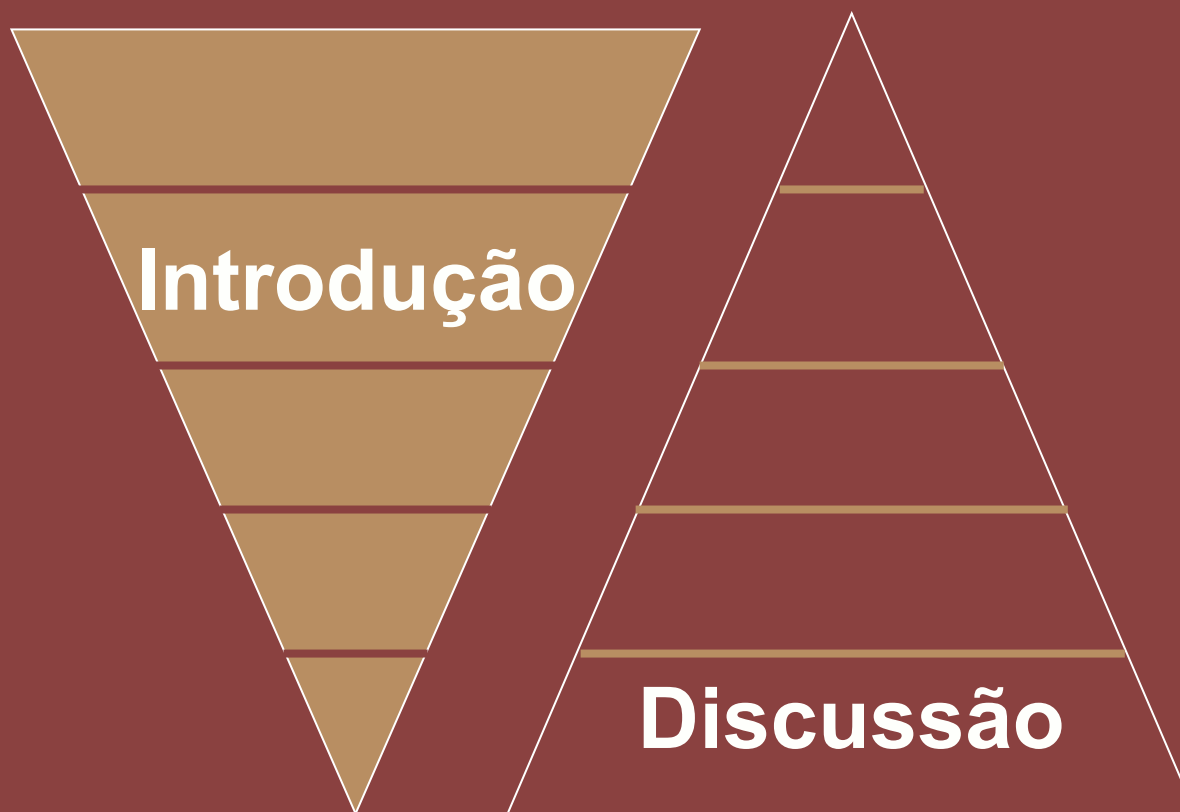


Ilustração: BETOUECHI /  
PINGADO

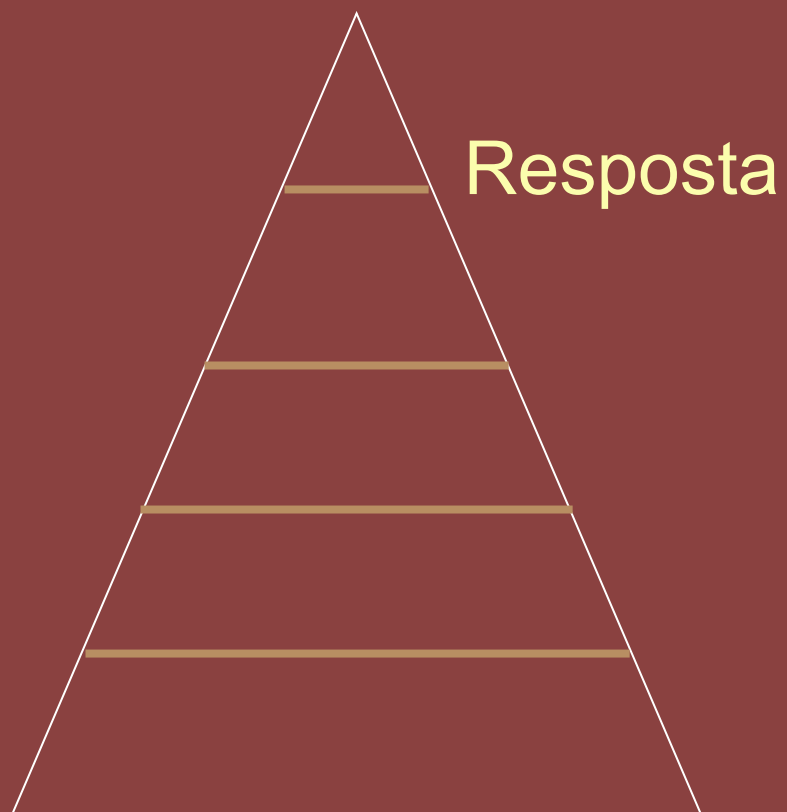
# DISCUSSÃO

**Reposta**  
**Posicionamento**  
**Contribuição**  
**Finalização**

**\* Extras**



# DISCUSSÃO



# RESPOSTA

“We found evidence for an increased risk of being responsible for a road traffic crash for users of prescribed medicines defined as presenting a level 2 or level 3 risk of driving impairment according to the French medication classification system.”

# RESPOSTA

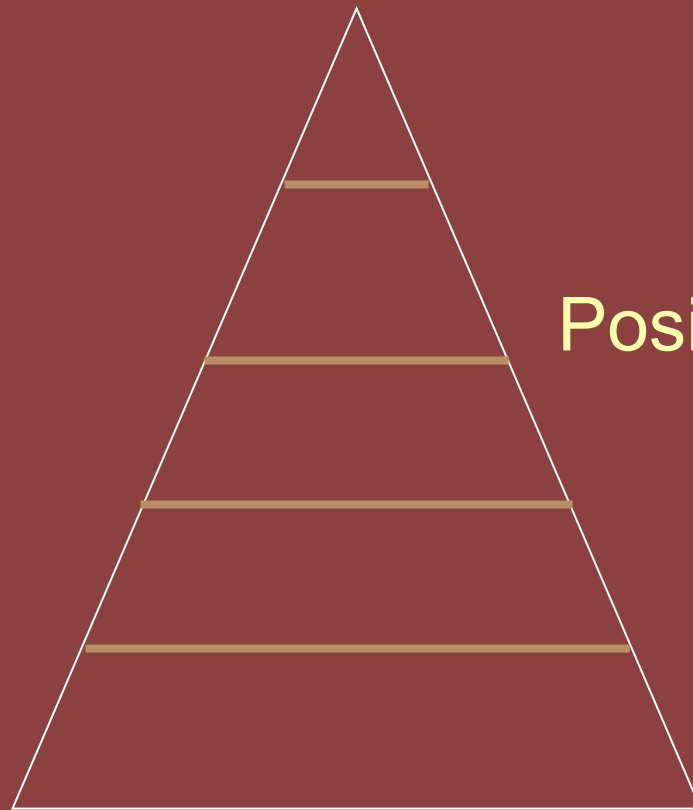
The objective of our study is to evaluate previously proposed criteria for cervical carotid artery and internal jugular tumor invasion to set the most accurate sonographic parameters.

We sought to establish sonographic criteria values that could help the detection of carotid artery and internal jugular invasion by malignant tumors.

# RESPOSTA

“We wanted to evaluate the importance of vascular features in differentiating between benign and malignant breast lesions to establish a system that could be actually translated into clinical practice. We found that vascular features analyzed by unenhanced and enhanced color Doppler associated with the morphological BI-RADS criteria were helpful in distinguishing between such lesions”

# DISCUSSÃO



Posicionamento

## POSICIONAMENTO

ABC in tandem duplication was observed in *A. fulana* ecotypes as well as in *A. siclana*. Because they are distantly related species of the *Aparecidus* genus, the results suggest that ABC in tandem duplication occurred before *Aparecidus* divergence (X et al., 2000). This hypothesis is supported by the presence of a single ABC copy in the more distantly related *Crassica* species (*Craciceae* tribe. Y et al, 2002).

# POSICIONAMENTO

Some studies published in the literature trying to assess a radiation tolerance dose for hearing function in XY adult patients, tried to establish an accurate cut-off value for radiation, mainly when treatment Z is also performed. They found that radiation alone with doses less than 20 Gy hardly ever damages the ear, however the threshold of cochlear dose for hearing loss with treatment Z and radiation combined can be as low as 10 Gy (Smith and Taylor, 2011).

# POSICIONAMENTO

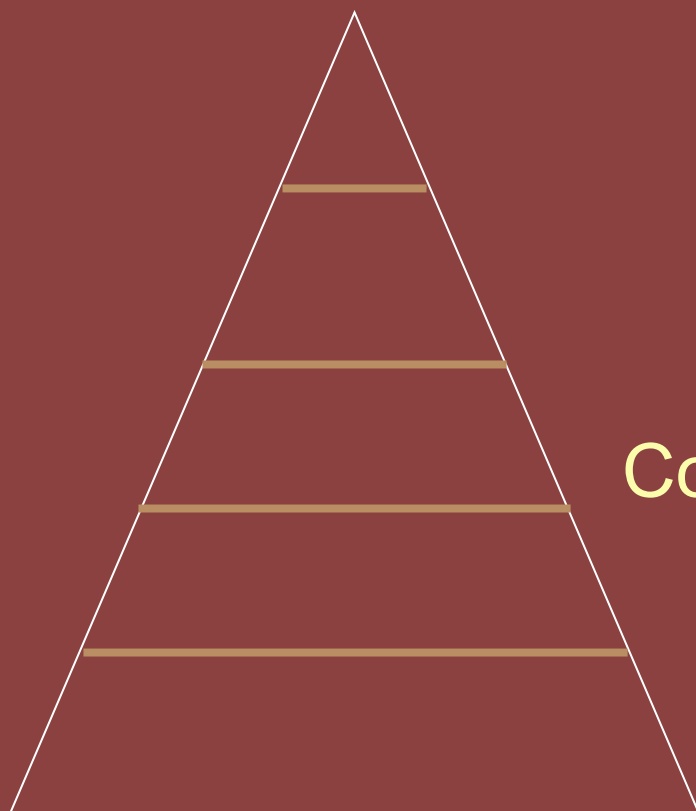
It has been shown that (**Dado do estudo**) radiation alone with doses less than 20 Gy hardly ever damages the ear, however the threshold of cochlear dose for hearing loss with treatment Z and radiation combined can be as low as 10 Gy (Smith and Taylor, 2011).

## POSICIONAMENTO

**Narrativa:** In a study by Smith et al (2010) an increased 25% risk occurred with doses up to 720 mg/m<sup>2</sup> and on average, 50% of patients showed some deficit in higher frequencies when doses greater than 450 mg/m<sup>2</sup> were applied.

**Informativa:** It has been observed that an increased 25% risk occurs with doses up to 720 mg/m<sup>2</sup> and on average, 50% of patients show some deficit in higher frequencies when doses greater than 450 mg/m<sup>2</sup> are applied (Smith et al, 2010).

# DISCUSSÃO



Contribuição

# CONTRIBUIÇÃO

This is the first report of an in vivo investigation on tamoxifen's efficacy against Leishmania infection and points to a new alternative in the treatment of leishmaniasis.

This is the first comparison of degradation enzymes genes repertoires and their diversity in the Craciceae family. We also show a new methodology to study this biological apparatus based on text mining, protein structure conservation, and a new criterion of sequence clustering.

# CONTRIBUIÇÃO

The results may also be of biotechnological application as they may assist the discovery of novel degradation enzymes involved in the production of cellulosic ethanol. Also, production of xanthan gum, an important industrial biopolymer, can also benefit from genomic knowledge about these enzymes (Smith et al., 2006).

“Thus, *CFL1* levels can help establish which early-stage patients should receive a more aggressive therapy as an attempt to reverse the poor prognosis. This could lead to a better management of NSCLC and decrease its recurrence.”

# CONTRIBUIÇÃO

Our results indicate that all patients with unexplained anaemia should be screened for chronic lead poisoning

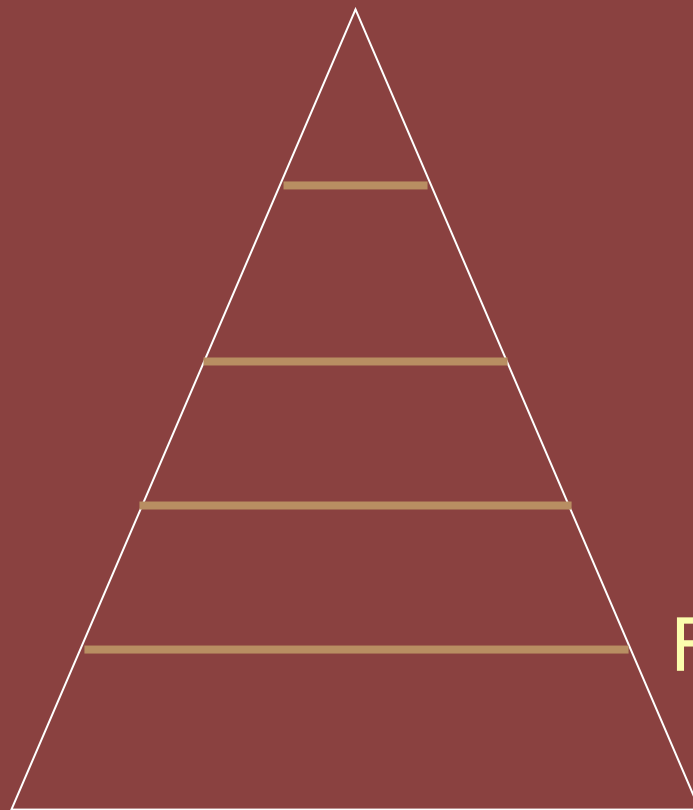
These results indicate that clinicians should consider the use of endovaginal ultrasound in all patients with a family history of endometrial cancer

# CONTRIBUIÇÃO

Our data are in accordance to case series reported in the literature [1,2,3,12,15,16,17,20,27,35].

The clinical features in our study were mild and different from those of other pediatric reports which have included children with acute liver failure or chronic symptomatic liver disease [1,2,3,12,15,16,17,20,27,35]

# DISCUSSÃO



Finalização

# FINALIZAÇÃO

To better understand this step, future work on the new degradation proteins reported here should be targeted towards the subset of enzymes predicted to be secreted by the bacteria.

Here we show that individuals who carry the long alleles of DRD4 and 5-HTTLPR take greater financial risks. We speculate that financial risk taking may result from evolutionarily adaptive mechanisms that encourage novelty-seeking behavior, however future research is needed to determine whether it leads to better economic outcomes and evolutionary benefits, more broadly construed.

# FINALIZAÇÃO

A conclusão não é o resumo de seu artigo!  
Ela é a “moral da estória”.

# FINALIZAÇÃO

**Pergunta** Nós nos perguntamos se tumores e placenta expressam genes que não são observados em tecidos normais.

**Resposta a pergunta** A expressão da maioria dos genes pôde ser observada em placenta e tumores mas não em tecidos normais.

**Conclusão** Os resultados revelam que tumores e placenta compartilham um grande número de genes.

# COMO NÃO FINALIZAR A DISCUSSÃO

“Additional research is needed.”

“Further studies are necessary.”

“The meaning of these results is uncertain.”

**Você deve ser mais específico:**

“Studies of patients earlier in the course of the disease would be enlightening.”

“Future research should follow up patients for a longer period.”

# EXTRA

## O que você teria feito diferente?

“A limitation of the current study is that it represents a retrospective comparison of multivariant HIV-1 transmission among patient cohorts having different enrollment criteria and different behavioral risk assessments.”

# TEMPO VERBAL DA DISCUSSÃO

- Escreva sempre **no passado** o que você fez
- Escreva sempre **no presente** suas interpretações

“Whereas the results of the primary virological endpoints **indicated** a superiority of the oseltamivir-zanamivir combination to zanamivir monotherapy, clinical results **were** not significantly different, suggesting that oseltamivir **adds** essentially nothing to zanamivir monotherapy. This **view is** concordant with the above hypothesis of the predominant catalytic site occupation by zanamivir when the combination is administered.”

# INTRO - DISCUSSÃO

## INTRODUÇÃO

None of these approaches address the issue of whether a helminth infection increases the susceptibility of the host to acquire *de novo* infection with an immunodeficiency virus after mucosal exposure, the predominant route of HIV transmission in humans.

## DISCUSSÃO

This is the first report of an in vivo investigation on tamoxifen's efficacy against Leishmania infection and points to a new alternative in the treatment of leishmaniasis.

# INTRO - DISCUSSÃO

## INTRODUÇÃO

Recent findings in neuroscience suggest that the neurotransmitters dopamine (3) and serotonin (4) have important roles in decision making.

## DISCUSSÃO

ABC in tandem duplication was observed in *A. fulana* ecotypes as well as in *A. siclana*. Because they are distantly related species of the *Aparecidus* genus, the results suggest that ABC in tandem duplication occurred before *Aparecidus* divergence (X et al., 2000). This hypothesis is supported by the presence of a single ABC copy in the more distantly related *Crassica* species (Y et al, 2002).



Ilustração: BETOUECHI/  
PINGADO